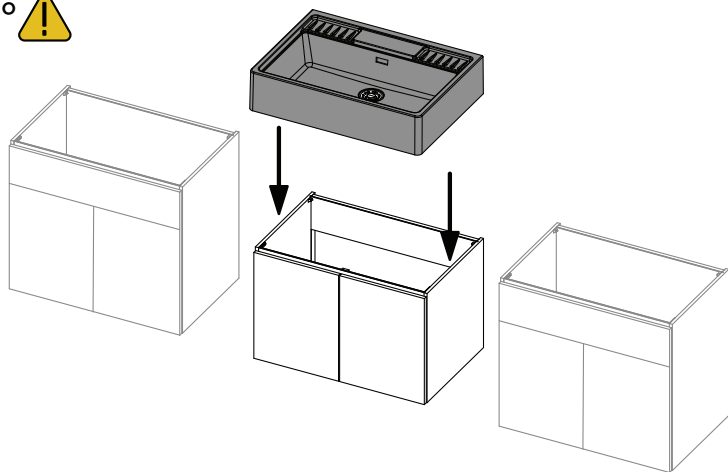


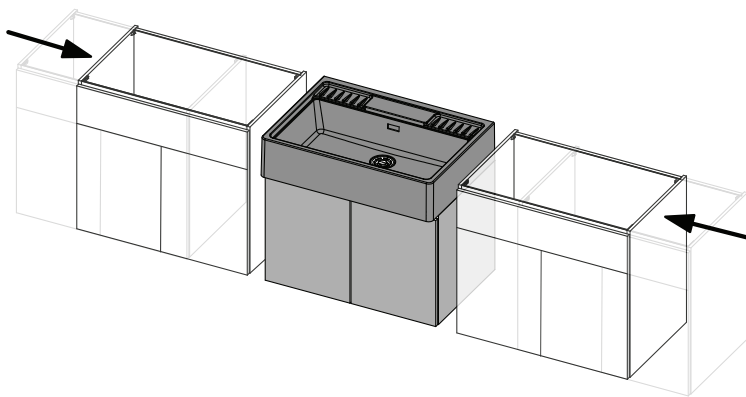
general tolerances where not expressly communicated $\pm 0,4\%$
connection dimensions according to UNI EN 695
eventual exception are reported with *

elleci

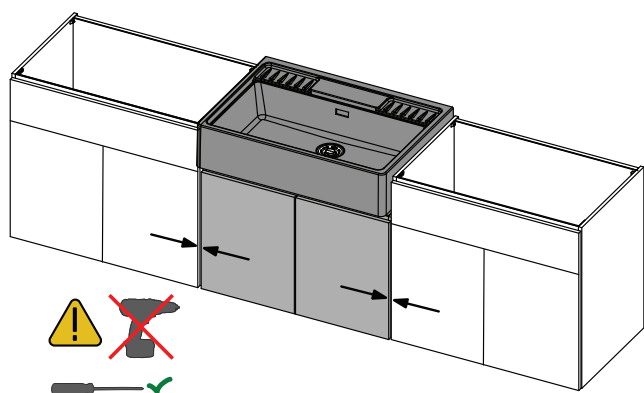
1° 



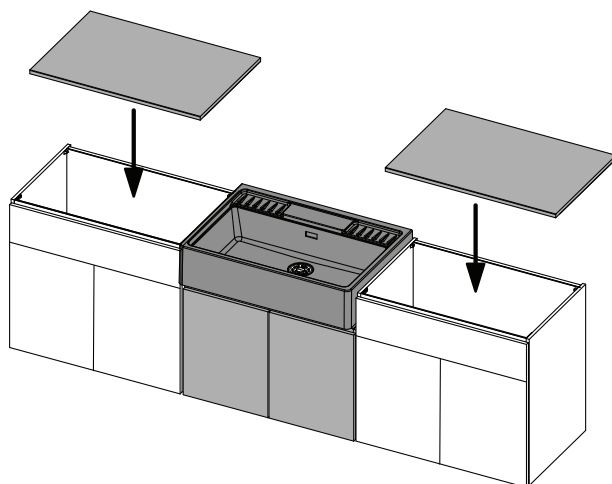
2°



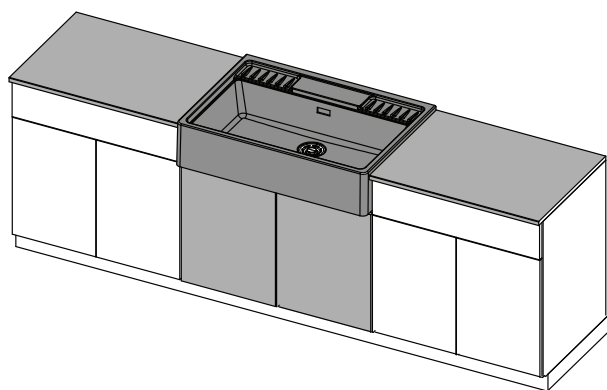
3°



4°



5°



Spazio 600_665

assembly stages

general tolerances where not expressly communicated $\pm 0,4\%$
connection dimensions according to UNI EN 695
eventual exception are reported with *

elleci